

The Balaam residence is located in Hamilton, an inner northern suburb of Brisbane on the banks of the Brisbane River. The house hugs the east and south boundaries of its riverside site, leaving a valuable private garden space to the west, offering play space for children and a cosy gathering nook around a stone fire hearth.

The house presents a heavily articulated and screened façade to the north and west while 'peeling' back to the city views over the river to the south. Solid, playful zinc walled elements juxtapose the light weathering timber 'follies' that serve different programmatic needs. The clearly extroverted pool conspicuously cantilevered over the entry is the centrepiece for life, play and drama within the house. Highly articulated walls are variously cast concrete, sensuously undulating zinc-work, beautifully rich timbers or fine, raw battening.

The 900-square-metre house has a spatial flow that is rich, crafted and surprising. The basic configuration of stacked children's rooms to the north and parents', guests' and entertaining spaces to the southern riverfront can be predicted but the flow, shaping and interlocking of these spaces has an ever-changing vitality. Multiple levels within the design accommodate the various programmatic needs, achieving a complementary and considered zoning to suit all the occupants. The first floor level accommodates the bulk of living needs including the outdoor living and pool.



1

Some elements, such as the three-level stack of glass floors at the lift threshold are pure drama, while others, including the highly effective central natural ventilation core, reflect the confident application of technical knowledge.

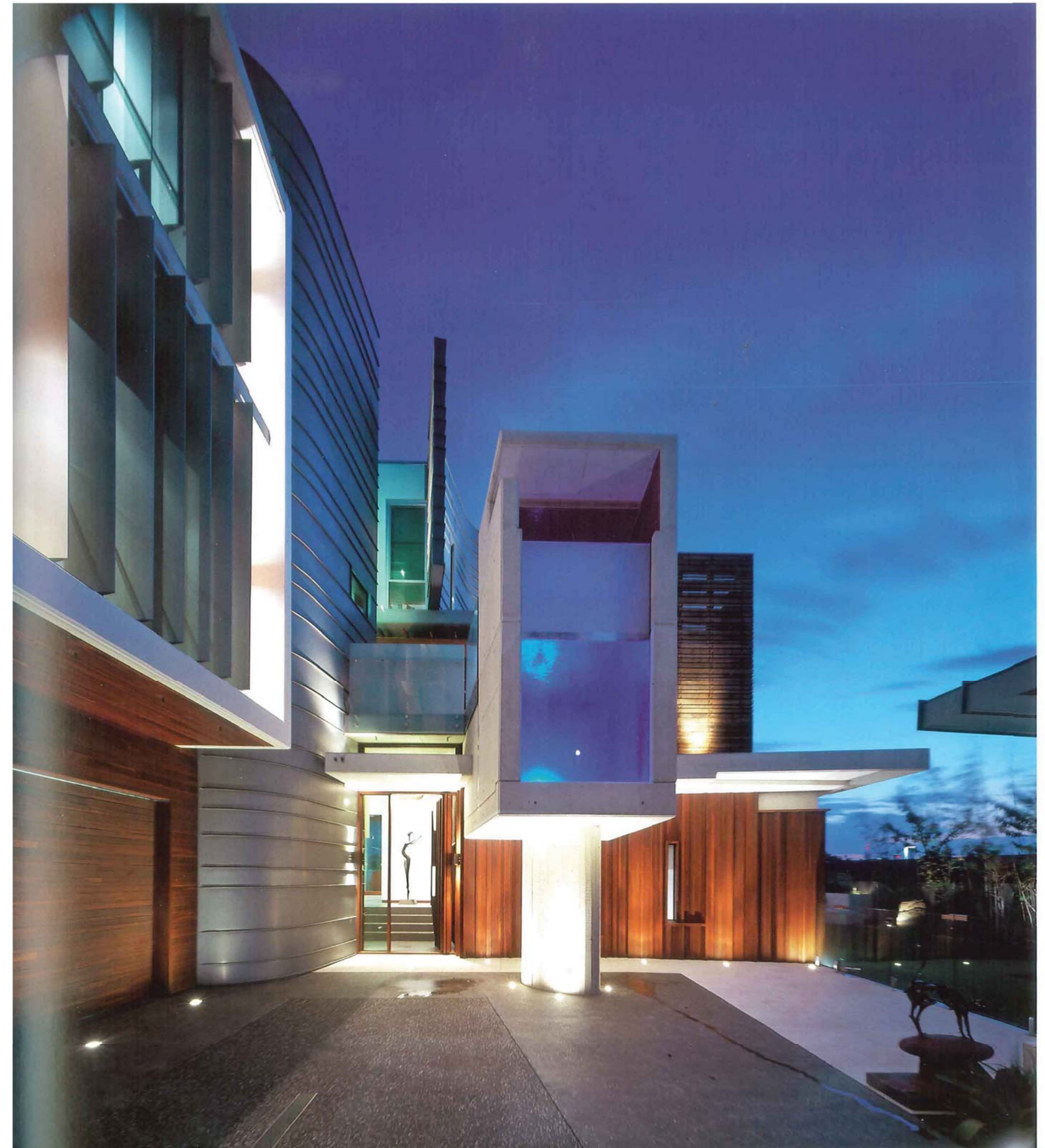
Sustainability measures include rainwater harvesting, solar hot water, passive heat stack cross-ventilation strategy and solar control glass. Operable louvres, shutters and blinds controlled by solar clocks limit the use of air conditioning. Thermal mass and low-maintenance, recycled materials were all a consideration.

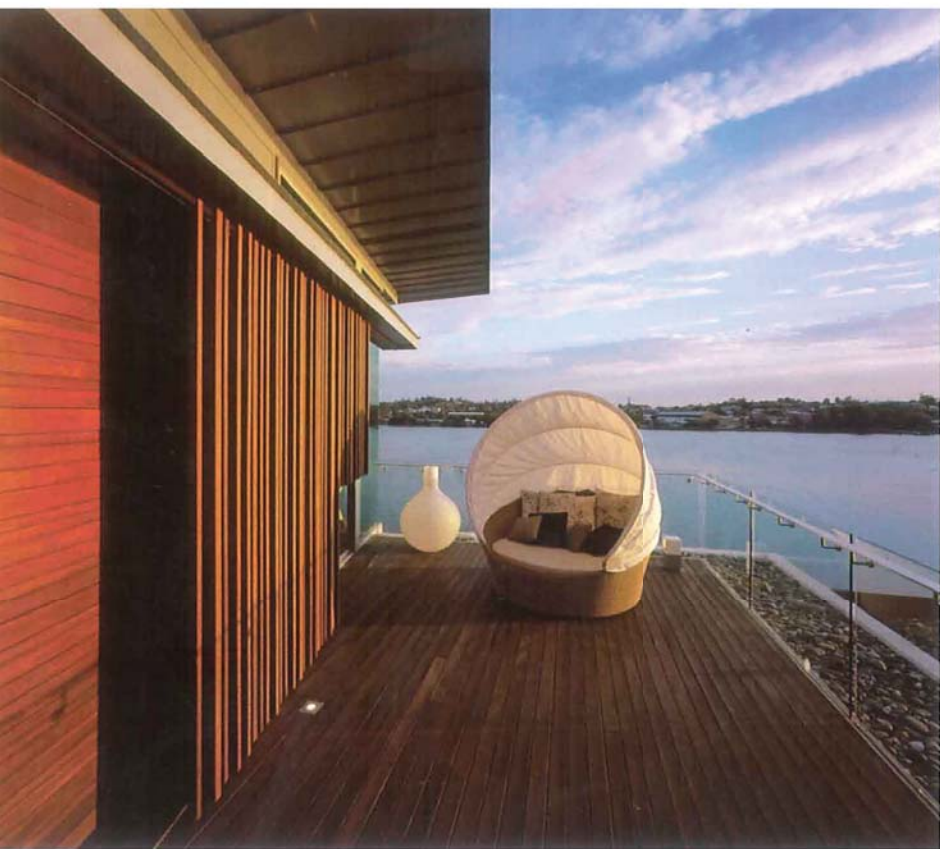
1 Southwest view of house from public boardwalk  
Opposite  
Entry and cantilevered swimming pool at first floor level

Arkhefield

# Balaam Residence

Hamilton, Queensland, Australia





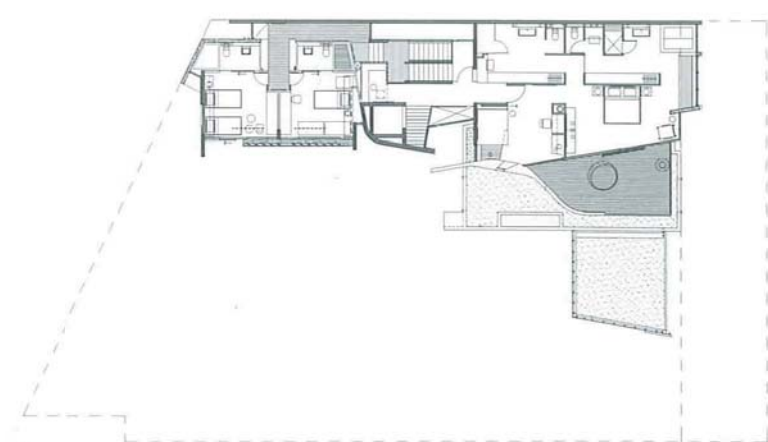
3



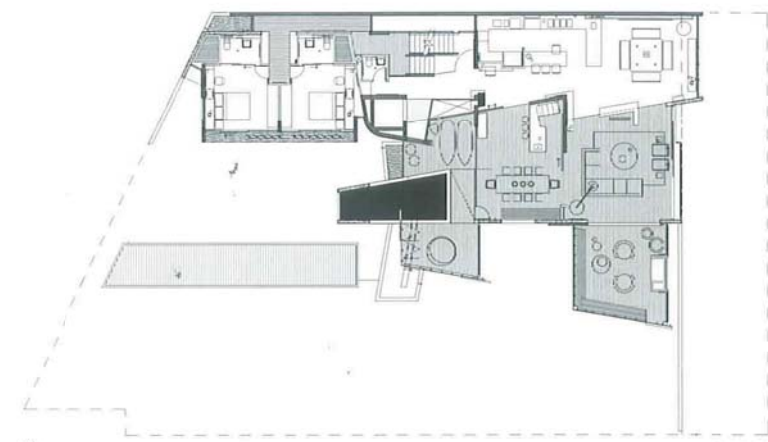
4



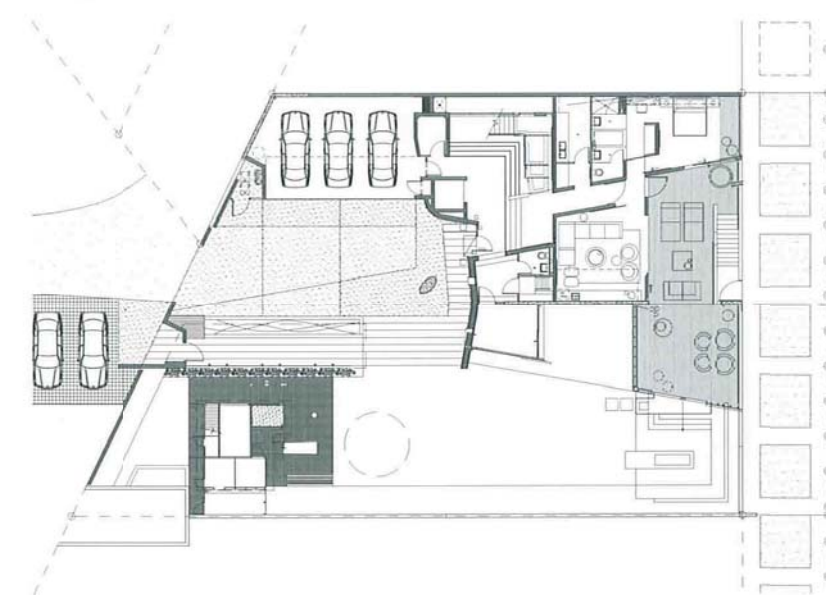
6



8



9



10



5



7

- 3 Roof terrace off main bedroom
- 4 River and city views from dining room
- 5 Outdoor pavilion and living room threshold looking north
- 6 Entry lobby showing water feature and main stair
- 7 Outdoor pavilion with fireplace and city views to the southwest
- 8 Second floor plan
- 9 First floor plan
- 10 Ground floor plan

Photography: Scott Burrows, Aperture Architectural Photography