

Elysium

Noosa, Queensland, Australia

Arkhefield

Photography: Scott Burrows, Aperture
Photography

This house, part of the exclusive Elysium community, was designed with the aim of combining the attractions of coastal living with regionally inspired sub-tropical modernism and the qualities and natural assets of the specific site.

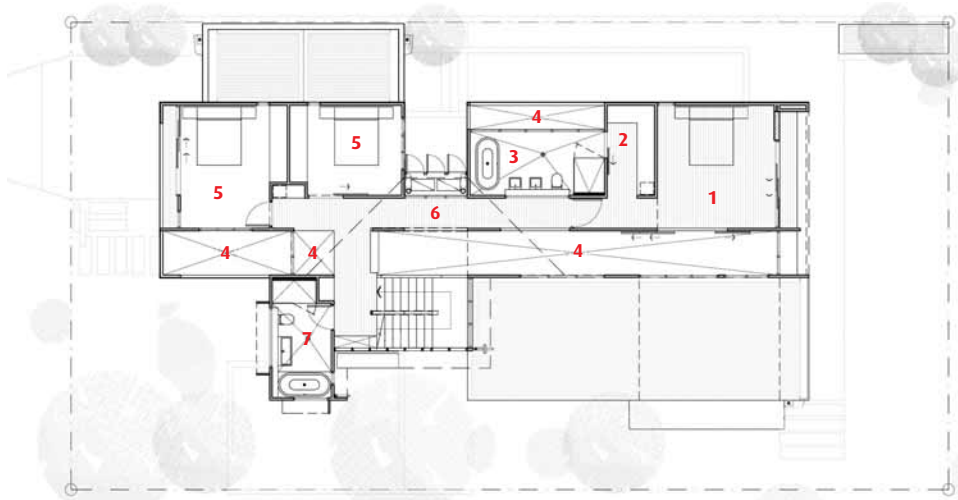
The concept centers on strong simple forms and materials that create volume, light, shadow, and define space. Three simple forms hang off a "living spine," creating a transparent, dynamic circulation and gallery space. Each element contains a different function and is defined by its own material. Junctions between these forms are special but unpredictable

spaces of tense high volumes of filtered and colored light. The spaces flow out to the edge of the property and the integration of indoor to outdoor space is seamless.

The pool is designed to integrate with the dining area, creating colored, warm reflected light inside the space. The living and kitchen functions wrap around the outdoor living area, which cantilevers out into the park to the north. The elevations are deliberately ambiguous and dynamic as they change from walls to screens within the same material and surface.

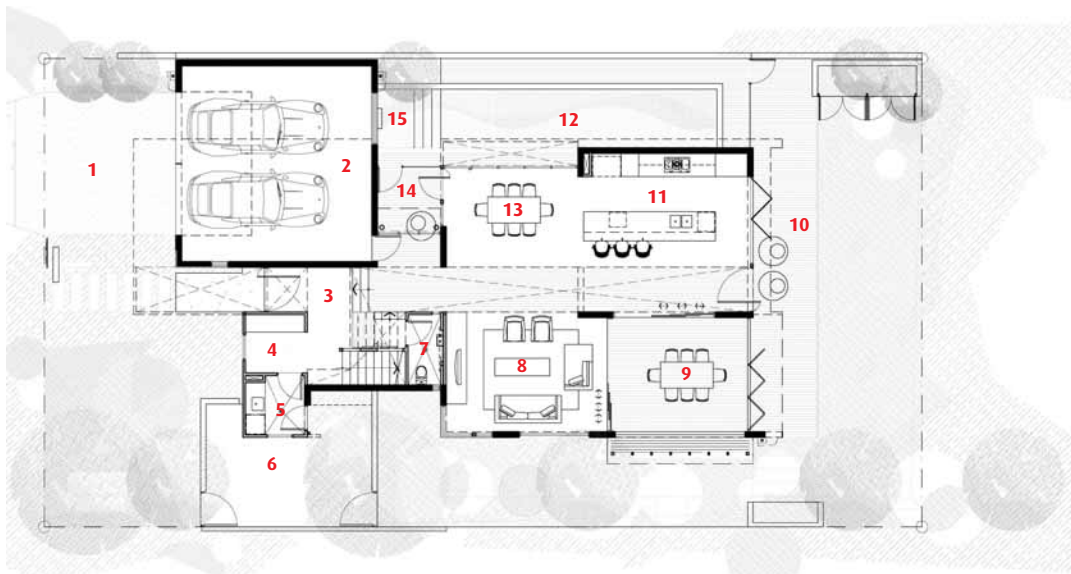






Second floor plan

- 1 Master bedroom
- 2 Walk-in closet
- 3 Ensuite
- 4 Void
- 5 Bedroom
- 6 Gallery
- 7 Bathroom



First floor plan

- 1 Driveway
- 2 Garage
- 3 Lobby
- 4 Study
- 5 Laundry
- 6 Drying court
- 7 WC
- 8 Living
- 9 Outdoor living
- 10 Deck
- 11 Kitchen
- 12 Pool
- 13 Dining
- 14 Courtyard
- 15 Spa

