

Lockyer House

Bardon, Queensland, Australia

Shaun Lockyer Architects with Arkhefeld

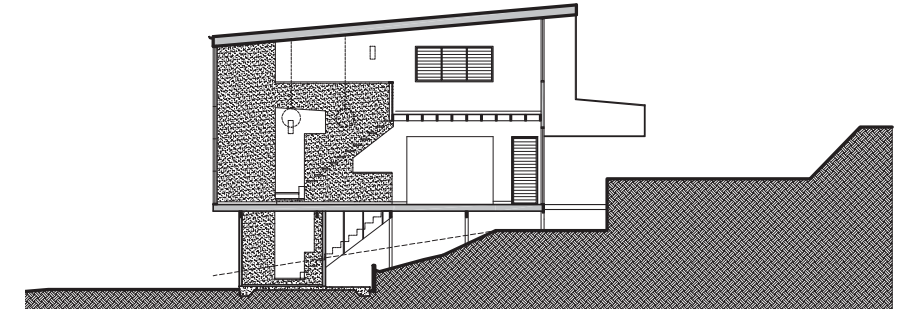
Photography: Scott Burrows

Lockyer House is a small, contemporary extension to a post-war house in Bardon, a leafy and hilly fringe suburb in Brisbane. The design looks to address the primary architectural issues of context and language, as well as finding the 'essence' of what is needed from an accommodation/resource perspective in an effort to create an engaging but practical and economical outcome.

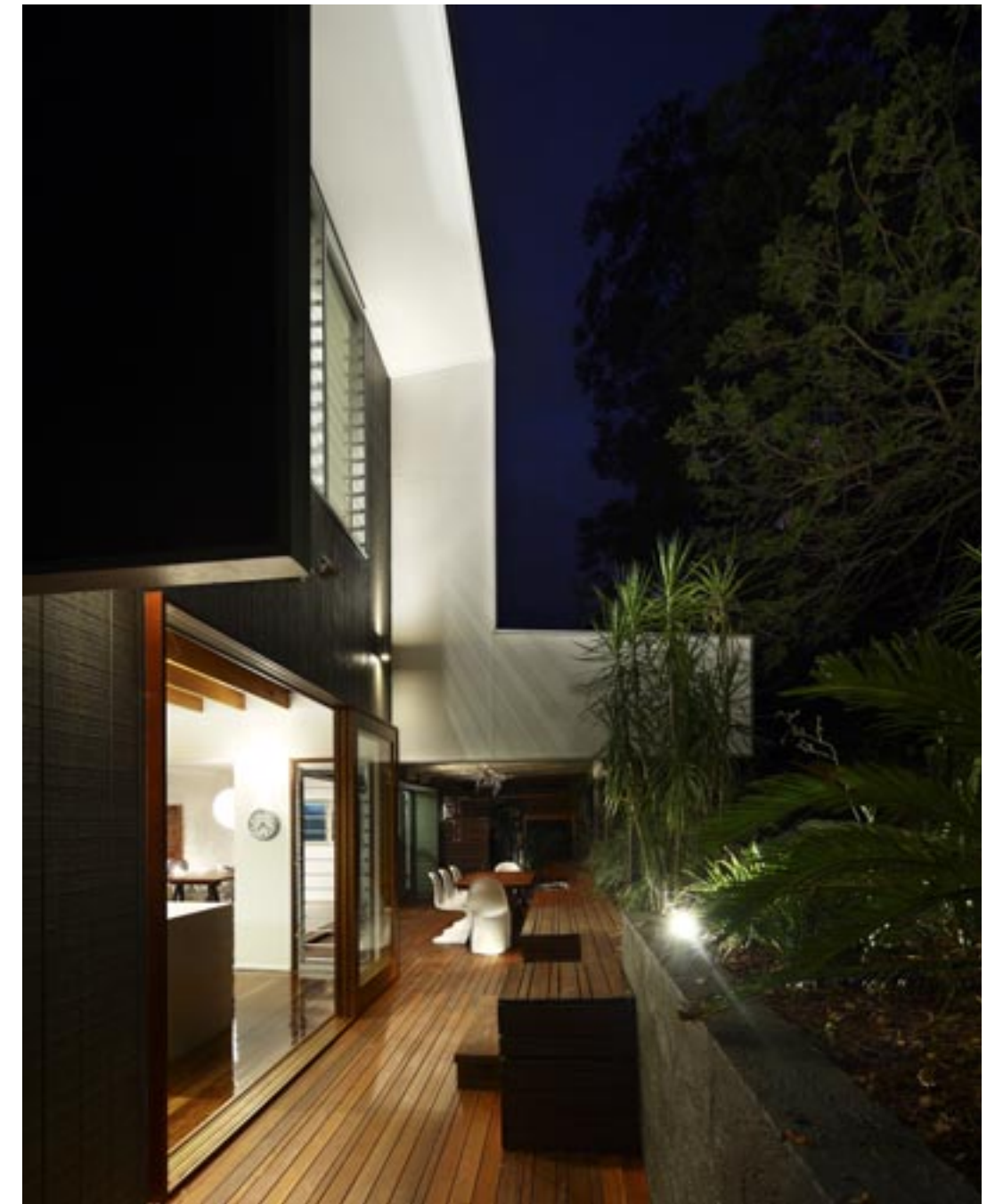
The design of this house is all about creation of a simple, cost-effective 'pod' that needed to accommodate the needs of a young family that had outgrown the original cottage. The other core function of the extension was to improve the connection to the landscape, engage

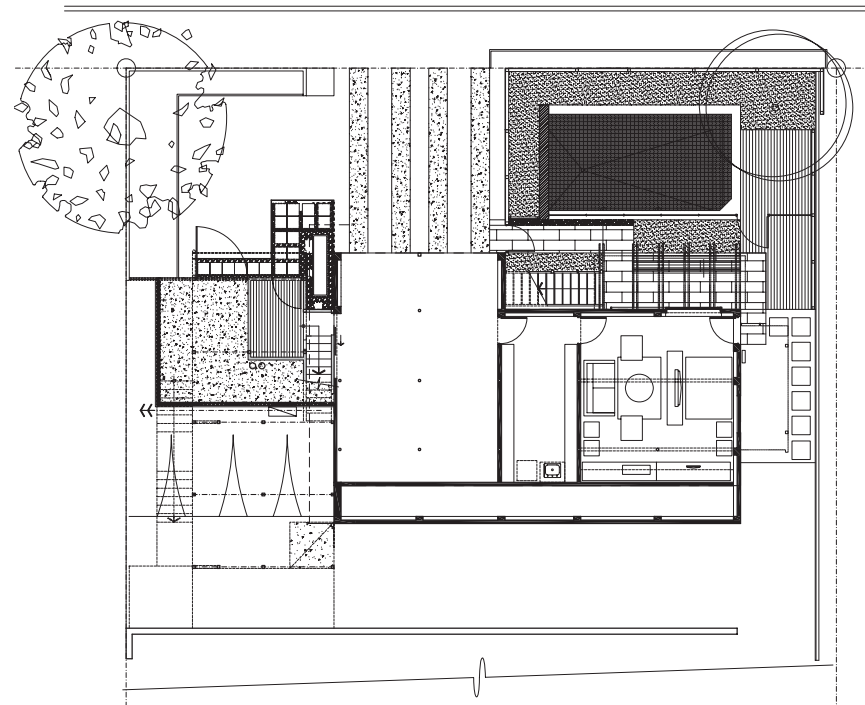
with the sky and to provide a more climatically comfortable place to live, using the minimum resources possible to achieve this. Essentially, the space is about joy.

The retention of the old cottage preserves cultural and architectural identity and, more basically, public expectation. The contemporary extension, while highly visible from the street, is partly concealed by the large tree on the site and gives over the landscape zone to the public realm. The house is highly animated at night, forming a 'lantern' that creates a sense of joy in the street for all.

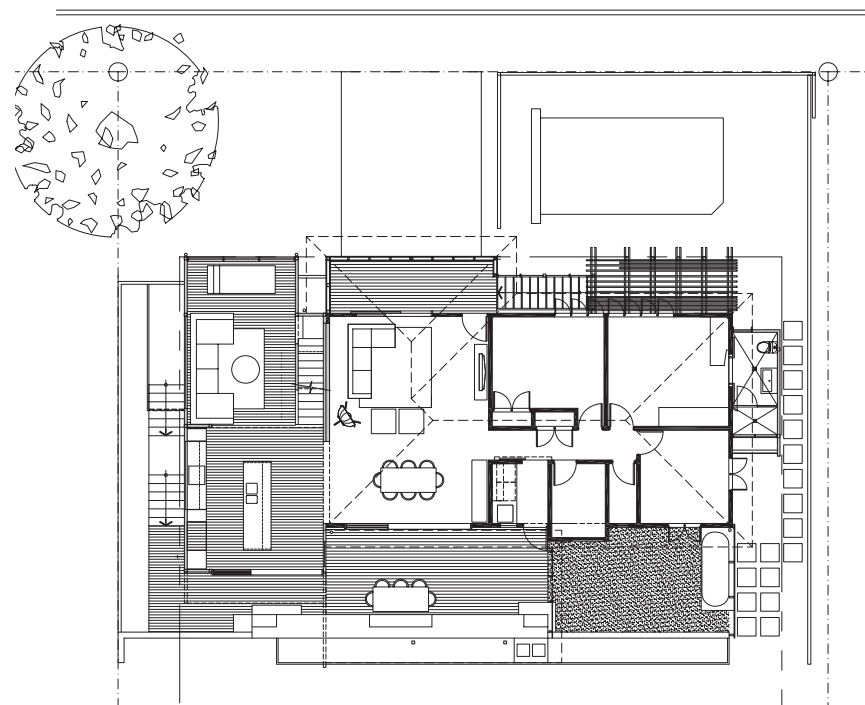


Section





Ground floor



First floor

