

DYNAMIC DUO

A Brisbane couple's courage and commitment has produced a unique home with great bones, old and new.

STORY *Laura Barry* | STYLING *Kate Nixon* | PHOTOGRAPHY *Maree Homer*

EXTERIOR "Our home has a deliberately dual appearance," says owner Carmel Gale. The family did the 'graffiti' on the boundary wall themselves. "Chair One" (cottage verandah) and 'Polisade' (extension) outdoor chairs. Cult. ▶



FAMILY ROOM above right A sliding door between this room and the kitchen enables the children's wing to be closed off. Vintage 'Le Bambole' chair, Istidix. Sofa, Space. Coffee table, Cult. Wall light, Euro luce. Rug, Armadillo & Co. Linen curtains, Warwick Fabrics. **MAIN ENSUITE** The aged-brass finish on the Astro Walker tapware references the original cottage. Zuster 'Zi' mirrors, Reeco. Porcelain benchtop in Calacatta Paragon, Ardelomas. Bluestone wall/floor tiles, Eco Outdoor. Stool, Living Edge. **Smart buy:** Buster+Punch 'Heavy Metal' solid steel pendant lights, \$265 each, Living Edge. **MAIN BEDROOM** "Most of our artworks – including this amazing piece by Leah Thiessen – are abstract and colourful, which is the perfect counterpoint for our minimalist interior," says Carmel. Eames 'LCW' chair, Living Edge. Engineered-oak flooring (throughout), Royal Oak Floors.

THE
PALETTE

Dulux Lexion
Hull (extension
interior)

Dulux Black
(interior doors
and trims)

Dulux Complex
Blue (cottage
front door)

This is the life

"We bought the property knowing we would renovate," says Carmel. "It was just too small for us as it was – three compact bedrooms, one bathroom, one living area. Now we can easily accommodate our whole family, which numbers more than 40, for birthday get-togethers or Christmas." The pool is a big hit with the kids; the Sonos built-in sound system (controlled via smartphone) is a favourite with the adults.



Light
now pours
in from the new
skylights and
clerestory
windows.

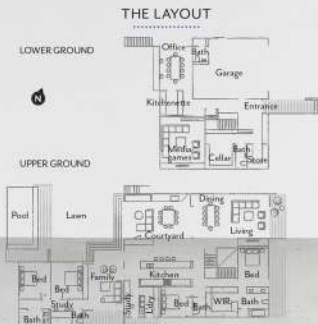
been used throughout the home and provides a striking contrast with the weatherboards of the cottage.

Natural materials - smoked oak, bluestone, porcelain and linen - help create an overall feeling of calm and balance. White brick is used as a feature in work zones such as the kitchen and on the stairwell; black steel is the thread that ties everything together. "The design is deliberately pared back to allow the raw materials to speak for themselves," says Carmel.

Shaun says his favourite feature is the new Velux skylights. "They're like punctuation marks between the heritage and modern parts, lovely little accents of light all over the house that are both practical and contemporary."

"Our brief to Shaun was to design a Modernist-leaning home that would accommodate an active family with children approaching their teens," says Carmel. "Shaun gave us exactly that, reviving the spirit of the cottage and updating it for the 21st century." ▶

Shaun Lockyer Architects, Newcastle, Queensland;
(07) 3257 7288 or lockyerarchitects.com.au. **Cule Constructions, Paddington, Queensland;** 0410 605 774 or@cule.constructions.



KITCHEN this image and opposite top left Carmel, pictured with Antone, Michael and Gabanille, chose Ginn porcelain panels from Arredomas for the benchtops. "It's UV-stable and eco-friendly, plus scratch-, heat-, stain- and mould-resistant," she says. Stools, Cule. Pendant lights, Fred International. Artwork by Kerry Armstrong.



FAMILY ROOM above right A sliding door between this room and the kitchen enables the children's wing to be closed off. Vintage "Le Bambole" chair, Istids. Sofa, Space. Coffee table, Cule. Wall light, Euraluce. Rug, Armadillo & Co. Linen curtains, Warwick Fabrics. **MAIN ENSUITE** The aged-brass finish on the Astra Walker tapware references the original cottage. Zuster 'Zi' mirrors, Reeco. Porcelain benchtop in Calacatta Paragon, Arredomas. Bluestone wall-tiles, Eco Outdoor. Stool, Living Edge. **Smart buy:** Buster+Punch "Heavy Metal" solid steel pendant lights, \$265 each, Living Edge.

MAIN BEDROOM "Most of our artworks - including this amazing piece by Leah Thiessen - are abstract and colourful, which is the perfect counterpoint for our minimalist interior," says Carmel. Eames "LCW" chair, Living Edge. Engineered-oak flooring (throughout), Royal Oak Floors.





Before

FEATURE TREES & PLANTS

- Fiddle-leaf fig
- Illawarra flame tree
- Juniper
- Blue chalksticks
- Agave
- Kalanchoe 'Gremlin'*
- Creeping boobialla (*Myoporum*)

OUTDOOR ROOM Ceiling-mounted heaters from Real Flame allow the family to dine alfresco year-round. "Mother" outdoor dining table, Cash Living, Hay "Hee" outdoor dining chairs and lounge chairs, DLM side table, Coco Flip pendant light, Gubi dining table and dining chairs, all Cult. Local hero: Beirnhelfreeman 'Terrace' tables, \$690 (rectangle) and \$730 (square), Tati. *For Where to Buy, see page 196.*

RENO SNAPSHOTS

Pivotal decision
"Engaging Shaun Lockyer Architects for the project. It couldn't have been better designed or planned," says Carmel.

Unexpected blowout
"Additional carpentry after discovering the cottage's walls weren't straight."

Where to save "We had planned to use clear-stained teak for the garage door to match the exterior cladding, but the cost was astronomical. Instead, we opted for cedar, which we stained black. It reduced the cost significantly."

Favourite room
"The front living area."
Words of wisdom
"Allow for a substantial contingency—old homes can have unexpected structural issues." H&G

